



THE MARYLAND WING SAFETY MONTHLY



AUGUST 2025

PAGE 1 OF 3



The Safety Way

You may have noticed that among the public footwear seems to be a second thought—or not given a thought at all. “Well, it’s summer. People want to be comfortable.” Summer or not, your footwear decisions should be based upon the job at hand. You will not be very comfortable if you loose the use of your feet. We wear helmets, reflective vests, gloves, and many other things to protect us when performing risky tasks, why not the proper shoes or boots? There are significant statistics

associated with foot injuries due to occupational hazards. Even at CAP and at home your feet are at risk under certain circumstances.

Please include footwear along with the rest of your risk analysis prior to venturing out. That is The Safety Way.



NO SLIPPER



WEAR FOOT PROTECTION

NEVER MOW THE LAWN IN FLIP-FLOPS

THE PILOT'S CORNER

One of the necessary tools a pilot must employ is spatial orientation. It is the ability to determine your position and direction and/or the position and direction of the aircraft in relation to surroundings. It involves using various sensory inputs, primarily vision, to maintain awareness of where the aircraft is and how to move it effectively in space. This is especially evident when maneuvering the aircraft on the ground which includes not only the taxi phase, but maneuvering in and out of the hanger. Any time an aircraft is damaged it creates a safety hazard—even if the damage is slight. Since it requires a qualified mechanic to determine if the aircraft’s airworthiness has been compromised, not only does CAP loose the use of an asset but flight crews are now at risk. To mitigate this risk, take it slow and easy. Use your eyes and the eyes of all personnel with you. And immediately stop all operations any time you are not sure if the aircraft will fit in the space you want to place it. Sounds like Risk Management to me. Sounds like safety.

PERSONAL SAFETY / HEALTH



“Food is the most widely abused anti-anxiety drug in America, and exercise is the most potent and underutilized antidepressant”

- Bill Phillips / reddit



SAFETY IN THE MOVIES...Grrr



This touching 1966 film poses an interesting dilemma: how to remain safe while dealing with a hostile environment and wild animals. After observing these conservationists one learns a

few important lessons. To ensure safety, first and foremost be prepared for eventualities. Make sure you have the proper clothing, equipment, and training for each task you wish to undertake. Second, respect and understand the environment and the dangers it can present. Work within that environment and make adjustments accordingly to ensure your survival. Further, plan your work, and don't go it alone. Stay in communication with your team and work together. When all of this is in place and practiced, then you can play with the lion cubs.



NAVIGATING CAPSIS



Born out of necessity, I am adding a new feature to our newsletter. NAVIGATING CAPSIS will take us through the rocks and shoals of not only making a CAPSIS submission (the SSO), but also how to perform the duties of a Review Officer. To begin with, I recommend you read THE MARYLAND WING SAFETY REPORTING GUIDE located at <https://mdwg.cap.gov/staff-sections/safety>. It upcoming months we will solve CAPSIS mysteries.



WEAR IT WELL . . . AND COOL

SUBJECT: Hot Weather Uniform Guidance

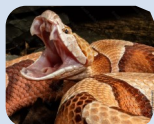
1. Civil Air Patrol conducts numerous activities, encampments, and missions year-round. Many of these events take place outdoors or in non-climate-controlled environments. High heat and humidity during these events can pose increased safety risks.
2. To mitigate heat-related risks, a Hot Weather Uniform is authorized, effective immediately. This policy applies to all activities except flight academies, which may implement the uniform beginning in 2026.
3. Adult Members are authorized to wear:
 - Gray shorts (cargo shorts permitted; color should closely match the corporate working uniform)
 - CAP corporate polo shirt
 - Black socks (no restrictions on length or type)
 - Black, closed-toe, athletic-style shoes (no specific style required)
4. Cadet Members are authorized to wear:
 - Black athletic/sports shorts
 - Uniform t-shirt or activity-specific t-shirt
 - Black socks (no restrictions on length or type)
 - Closed-toe athletic shoes (any color)



THE CADET CORNER



One of the more challenging yet rewarding experiences a cadet can have is Ground Team work. There are many things to learn about search and rescue and risk management in a variety of environments (all seasons and terrain types present their own unique risks and must be dealt with accordingly). Plus there are physical demands that help each cadet reach new levels of stamina and accomplishment. One risk you may encounter is the presence of wildlife. The first thing to remember is they are not pets nor do they wish to become pets or friends. These animals operate by instinct and are usually hostile to people. Take precautions. Do not approach and especially do not offer any foodstuffs. Many carry disease and have claws and teeth that can do great damage to a human being. The good news is they generally want to leave you alone. Remember, animal attacks are usually preventable. There is detailed information available at <https://ca146.cap.gov/moduledocuments/embed/2207/>



CAPR 160-1 IN FOCUS

160-1 2.4.6. Events, Activities, Missions. The member placed in charge of any CAP mission, activity or event (such as activity director, incident commander (IC), ground team leader, cadet leader, etc.) is responsible to ensure RM is conducted in the planning, execution and after-action assessment as outlined in chapters 3 and 4.

CAPR 160-2 IN FOCUS

160-2 6.8.1. Media Attention. Any event that could receive widespread visibility or media attention, especially if it could bring negative attention to CAP.

Your Director of Safety receives phone calls, text messages, emails. You can contact Lt Col Ray Phillips at: rphillips@md.cap.gov / 301-667-9652

ANIMALS ARE DANGEROUS



Do not stop or block any portion of a roadway while viewing wildlife. If you see wildlife while driving, find the next pullout, park safely, and watch from inside your vehicle or from a safe distance.

Keep all food, trash, and scented items in bear-proof storage at all times.

While hiking

- Be alert for bears
- Make noise
- Carry bear spray & know how to use it
- Avoid hiking alone
- Do not run if you have a surprise encounter with a bear

Bear spray is proven to be highly successful at stopping aggressive behavior in bears.



KE=1/2 MV SQUARED

Kinetic Energy is the stored energy a moving object possesses due to the combination of its mass and velocity. Controlled wisely in an automobile, it can be put to work for the benefit of all. Proper energy management keeps the vehicle under control, saves fuel, reduces maintenance costs, and protects the occupants.

However when mismanaged, it can kill you and others. Many accidents are caused by speeding (excessive velocity) and ultimately losing control of the vehicle (mass). Newton said it best: **force equals mass times acceleration.**

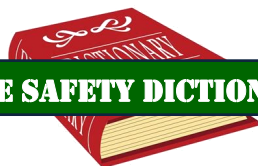
CAP vans, for example, are heavier than a car and have a higher center of gravity. They deserve respect. Respect yourself and others by managing your kinetic energy wisely.

WISDOM

Wisdom says alcohol and anything that moves or operates do not mix.



THE SAFETY DICTIONARY



Impairment—the state of being diminished, weakened, or damaged, especially mentally or physically.



Vehicle mishaps are the number one most reported SSO.



IMPAIRED DRIVING

Impaired Driving and its Impact on Your Civil Air Patrol Career By: MSgt. Jeremiah Hyatt, WA-001 (Edited by MDWG SE)

Impaired driving is the act of operating a motorized vehicle of any type while your body is impaired due to the use of alcohol or other substances. This action is illegal and dangerous and can have long-term side effects impacting those who did not even commit the act. And it is not a victimless crime. According to the National Highway Traffic Safety Administration (NHTSA), in the United States, a DUI accident occurs every 79 seconds. In 2022, over 13,524 people died, and over 600,000 people were critically injured in alcohol-impaired driving traffic accidents. What's even more tragic is that these unfortunate events are **PREVENTABLE** if people learn to take better responsibility for their actions.

As a member of the Civil Air Patrol, your conduct, both on and off duty, is seen as a reflection of your character and integrity. The public looks to you as an extension of the US Military, and the Cadets look up to you as an example of what a positive role model should be.

Being arrested for a DUI puts a stain on your character, but it can also cause major damage to your CAP Career. Depending on the severity of the infraction, it could disqualify you from CAP membership. The easiest way to avoid being the cause of these DUI statistics is to avoid putting yourself in a scenario where you will be the "bad guy" in this situation.

- Don't let someone get behind the wheel if that person has been drinking.
- If you're hosting a gathering, make sure everyone has a sober ride home.
- When driving, remember to wear your seat belt and limit distractions while driving; always be aware of other vehicles on the road.



Download ride-share Apps such as Uber, Lyft or Wingz. Utilize public transportation. As safety leaders in and out of the Civil Air Patrol, part of our sacred duty is to help bring the ongoing safety issues to light. This also means being able to assist our fellow citizens. When it comes to Alcohol and Drug abuse this means being able to help provide resources for those trying to recover from their demons. If you or someone you know has an issue with drugs or alcohol, there are services available. Check out the civilian and USAF resources. Stay safe.



CAPR 132-1 IN FOCUS

11.1. Vehicle, activity, and operator shall be evaluated prior to the use of any vehicle. Use a CAPF 132 and Operational Risk Management assessment to accomplish this evaluation. Vehicle operators will perform these evaluations on all COVs. These evaluations will also be performed on TUVs and POVs when they are used to support operational missions.



CAPR 132-1 IN FOCUS

11.7. The vehicle evaluation items found to be a safety concern on the vehicle that cannot be corrected on the spot must be documented on CAPF 132 and the vehicle's manager must remove the vehicle from service until the safety issue has been resolved. Any member can remove the vehicle from service due to mechanical or safety concerns.